



Fletcher Model DDR

Walk-thru Chassis
General Specifications





Model DDR

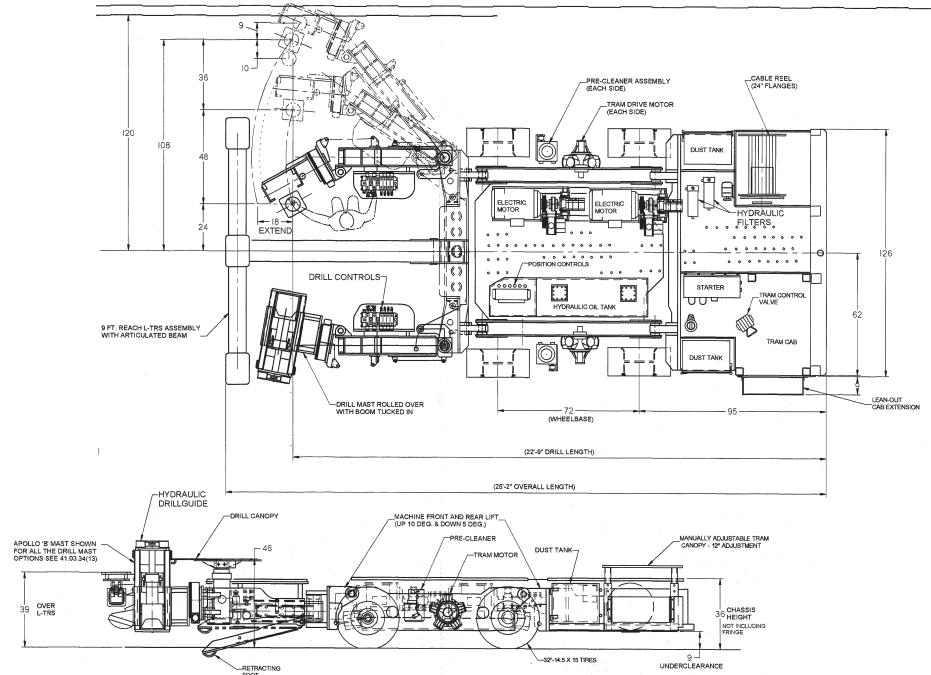


With Fletcher model DDR Walk-Thru, you get dual head, angle or vertical drilling in lower seams than ever. Model DDR offers a maximum straight line boom swing of 5.4 m to accommodate a 4 bolt pattern on 1.2 m centers. Masts tilt 45 degrees for truss installations; 90 degrees for tramming.

- 0.9 m chassis height, dual head machine with angle drilling capability
- A truss and rib bolter that can also be used as a production bolter
- Walk through chassis design eliminates the need for the operator to walk between the machine and the rib

Fletcher options

- | | |
|-----------------------------------|-------------------------------|
| Feedback drilling system | Power extend TRS beam |
| Quick change motor mounts | Auto dump pre-cleaners |
| Titan drill mast (4.5 ton) | Hydraulic power takeoff |
| Rock dusters | Rotary impact drillheads |
| Downhole drilling attachment | Headlights |
| Hydraulic drill guides | Crawler-mounted |
| Adjustable wear pad support posts | Articulating TRS beam |
| Radio remote control tram | Operator cooling fans |
| Five bolt pattern capability | Heavy duty tram w/.91 m tires |
| 3.3 m L-TRS assembly | |



General specifications

Electrical system: Dual 37 kW motors, horizontal axis cable reel; Lights.

Dust collection system: Internal through drill steel; blower: 62 cfm rotary lobe type; vacuum at drillhead: 12"-15" Hg; Fletcher dust tanks.

Hydraulic system: maximum working pressure: 2800 psi; tank capacity - 470 liters; filtration: (4) magnetic in-tank, (2) high pressure, hand operated fill pump with screened intake; hose fittings: JIC and SAE; dual Parker P350/315 Series pumps.

Drive system: four wheel chain type; tractor steering; turns within length; tram speed: 0-2.4 km/h; tram motors: Staffa B80 series with motion control valves; brakes: automatic spring set/hydraulic release disc; tires: 14.5 X 15 foam filled; front lift.

Safety system: L type TRS; driller canopies; tram deck canopy.

Drilling system: linear sumping booms; Apollo telescoping mast feed; thrust: 3.1 ton; feed length: 1.29 m to 2.05 m depending on mast size; torque: 0-400 N.m.; drill rotation speeds: 0-560 rpm; feed rate: 0-11m/min; boom extend: up to .55 m; minimum drill head separation: 1.2 m; maximum drill head separation: 6 m; adjustable bolt torquing valve; foot type boom stabilizers.

Maximum straight line swing	5.5 m
Overall length	7.7 m
Overall width	3.2 m
Overall chassis height	.9 m
Wheelbase	1.8 m
Machine mass	19050 Kg

(Dimensions and weight vary, depending on tire size and seam height application)

Model DDR

Standard equipment...

- Automatic disc brakes
- Fletcher dust tanks
- Four-wheel drive
- High pressure filters
- JIC hose fittings
- Front lift
- Adjustable bolt torquing and thrust control
- Cable reel
- Tram compartment canopy



"Fletcher" is a trademark of J.H. Fletcher & Co.

Komatsu Mining Corp. Group
mining.komatsu



Product designs, specifications and/or data in this document are provided for informational purposes only and are not warranties of any kind. Product designs and/or specifications may be changed at any time without notice. The only warranties that apply to sales of products and services are standard written warranties, which will be furnished upon request.

Komatsu, Joy, Montabert, P&H and other trademarks and service marks used herein are the property of Komatsu Ltd., Komatsu Mining Corp., or their respective owners or licensees.

© 2018 Komatsu Mining Corp. All rights reserved.