

KOMATSU



Fletcher Model HDDR Dual head roof bolter, walk-thru chassis





Model HDDR

Fletcher Model HDDR brings greater flexibility than ever to your high seam operation. Heavy-duty boom swing from 1.2 - 6.1 meters to allow several bolt installations from a single chassis position. Booms allow operators to drill over rubble, near ribs and over loose bottom areas. Bolting pattern is established relative to the roof, not the floor.

HDDR brings greater flexibility than ever.

Standard 90° mast tilt allows angle and rib drilling: Fletcher ATRS (Automated Temporary Roof Support) eliminates the need for temporary posts and jacks in most applications.

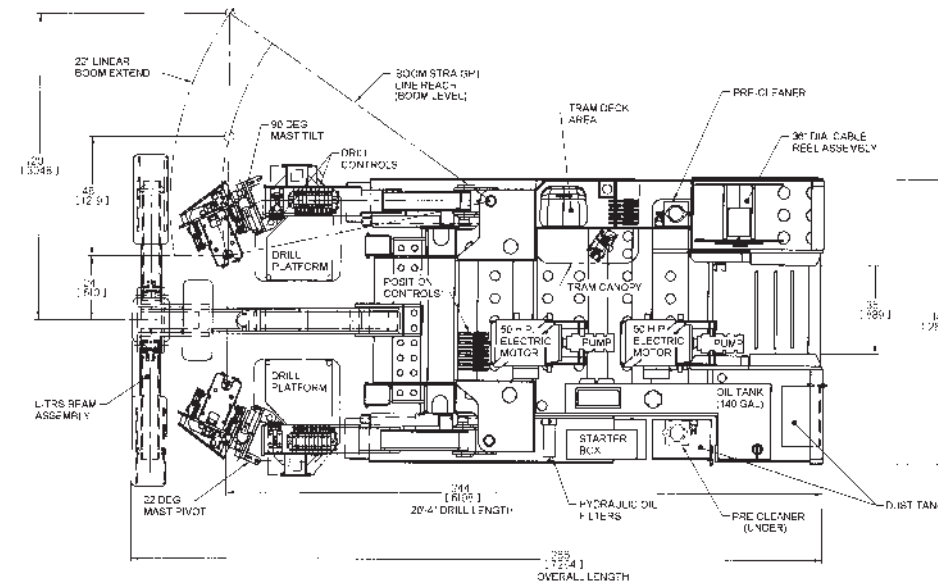
- Walk-thru chassis reduces miner exposure to rib hazards.
- Operates in seam heights of 1.8 - 5.2 meters (custom heights available).
- Dual heads install a full row of bolts from a single chassis position.
- High-strength elevating booms drill without direct support from floor below.

Material handling system

Mechanized mesh rack and mat rack as well as winch on material pods facilitate loading, storing, and operator access to the supplies. The mesh is delivered to the rear of the machine where the bolter operator winches the shift's supply of mesh into place using the radio control. The material pods are vendor-loaded above ground and delivered to the rear of the machine. The operator uses the radio control to winch that day's supply of consumable materials onto the bolter. The empty pods are off loaded and returned to the outside to be reloaded.

Fletcher options

10,000 lb. thrust drill mast	Hydraulic flow meters	Radio remote control tram
Auto dump precleaners	Mat holder, mesh clamps	Rock duster
Dust collection bags	Hydraulic extend ATRS beam	Rotary impact
Crawler drive system	Mast swing	Automatic drilling controls
Hydraulic power take-off	Tram intensifier circuit	High performance blowers
2.7 m feed mast	Independent platform lift	Intrinsically safe start system
Load sense hydraulic system	Material handling system	Hydraulic rear walkway ramp
Wet drilling system	Exhaust water conditioner	Rear chassis lift



General specifications

Electrical System: dual 37 kW motors; horizontal axis cable reel; strip-type panic bars with start switches at all control stations.

Dust Collection System: vacuum system for hollow-shaft drill steels; blower: rotary lobe type, 1.8 m³/min; vacuum at drill head: 305 mm Hg, separate system for each drill unit.

Hydraulic System: maximum working pressure: 2500 psi; reservoir capacity 680 to 757 litres; filtration: magnetic in-tank, Pall high pressure; hand-operated fill pump with screened intake; JIC hose fittings; dual pumps.

Drive System: 4-wheel chain drive; tractor type steering; turns within length; Staffa tram motors with motion control valves; automatic spring set, hydraulic release disc brakes; tram speed: 1.6 kph; foam filled tires.

Drilling System: linear sumping booms; telescoping mast feed; thrust: 0 - 31 kN (optional 44.5 kN); feed length: 1.8 - 2.3 m depending on mast size; torque: 0 - 407 Nm; drill rotation speeds: 0 - 560 rpm; feed rate: 40 m/min; boom extend: up to 610 mm; minimum drill head separation: 1.2 m; maximum drill head separation: 6.1 m; adjustable bolt torquing valve; 2 stabilizer jacks on front of chassis.

Features

Boom swing	3048 mm
Boom sump	610 mm
Boom lift	1524 mm
Overall length	7468 mm to 8230 mm
Overall width	2591 mm to 3353 mm
Chassis height	1067 mm to 1828 mm
Ground clearance	254 mm to 381 mm
Weight	27,216 kg

Model HDDR

Standard equipment...

- 90° mast tilt with hydraulic drill guides
- Independently elevating booms
- Automatic disc brakes
- Automated Temporary Roof Support (ATRS)
- Four-wheel drive/Crawler drive
- Cable reel
- Strip switch panic bars
- Deep chuck drill heads
- Illumination
- Dust collection system or Wet drilling system
- Fire suppression
- Foam filled tires
- Fore-aft mast tilt



"Fletcher" is a trademark of J.H. Fletcher & Co.

Komatsu Mining Corp. Group

mining.komatsu



Product designs, specifications and/or data in this document are provided for informational purposes only and are not warranties of any kind. Product designs and/or specifications may be changed at any time without notice. The only warranties that apply to sales of products and services are Komatsu's standard written warranties, which will be furnished upon request.

Komatsu, Joy, Montabert, P&H and other trademarks and service marks used herein are the property of Komatsu Ltd., Komatsu Mining Corp., or their respective owners or licensees.

© 2018 Komatsu Mining Corp. All rights reserved.