



15" Rim Wheel Unit

21SC04 shuttle car (part number 100649208)

The latest 21SC04 - 15" rim shuttle car wheel unit includes improvements to the king pin and bell seal. These improvements provide increased reliability and performance.

Key features

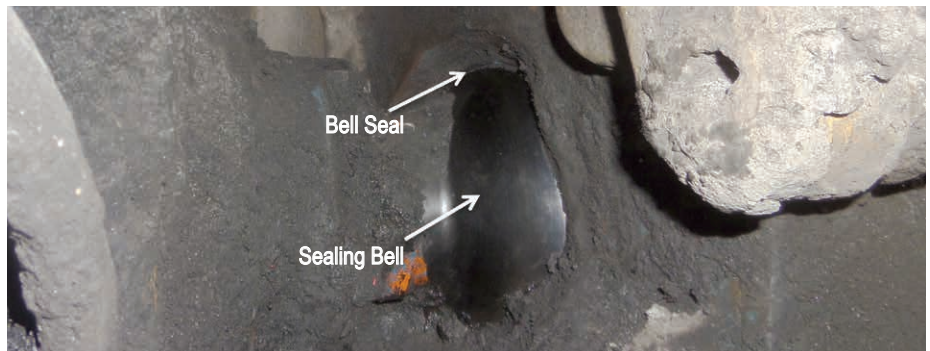
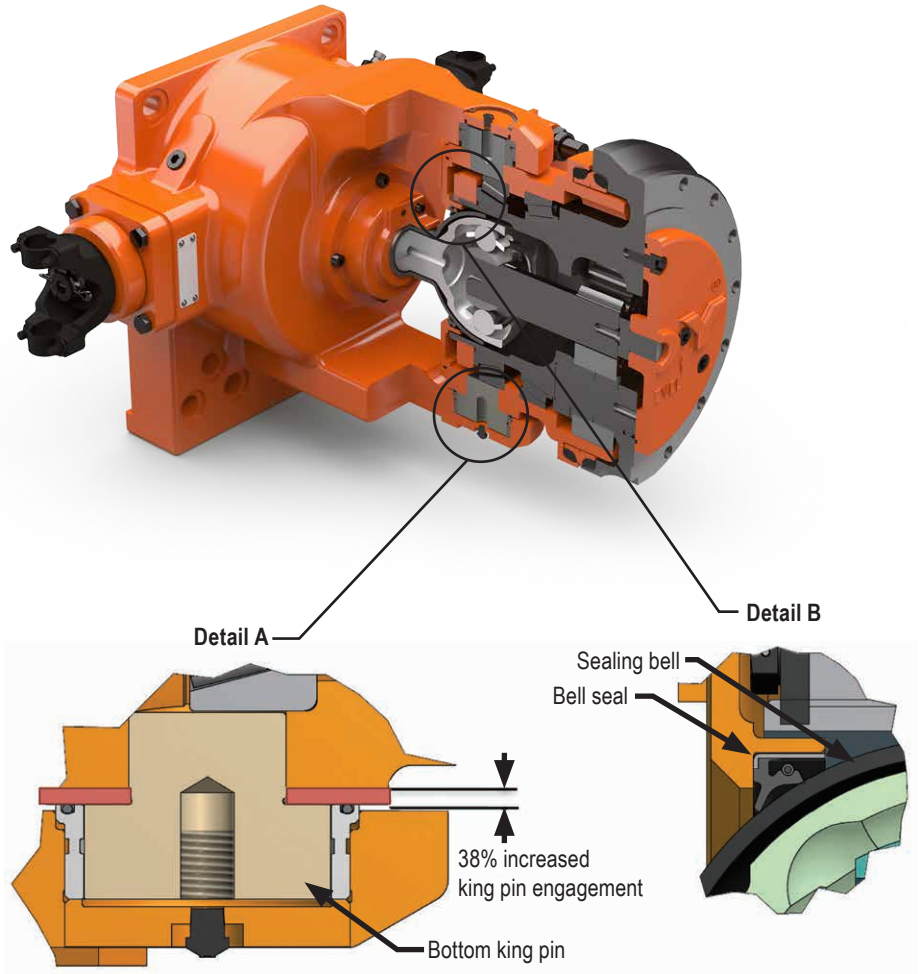
Bottom king pin redesigned

- King pin bushing with integrated seal, engineered by Joy Global
- Increased load capacity
- 38% increase in engagement length
- Improved rigidity, extends planetary life

Bell seal improvements

- Dual lip seal engineered by Joy Global
- Seal creates a vacuum to bell and conforms when misaligned and/or over-tightened
- Retains tension and eliminates bell seal creep
- Reduced maintenance costs

Includes steering arm mounting hardware



21SC04 bell seal - 18 months in service with SEP320 gear oil

Wheel unit test stand

- First implemented in 2014 all Joy Global service centers have test stands installed
- All Joy wheel units are tested to ensure proper assembly to OE specifications
- Test stand designed by Joy Global for quality testing of wheel units
- Temperature of bearings is monitored during testing to aid in proper assembly
- Units run in both forward and reverse with turning cycles to properly adjust bell seal and constant velocity joint



JOYGLOBAL



Product designs, specifications and/or data in this document are provided for informational purposes only and are not warranties of any kind. Product designs and/or specifications may be changed at any time without notice. The only warranties that apply to sales of products and services are Joy Global's standard written warranties, which will be furnished upon request.

Joy Global, Joy, Montabert, P&H and related logos are trademarks of Joy Global Inc. or one of its affiliates.

© 2016 Joy Global Inc. or one of its affiliates. All rights reserved.

EN-15RWSC01-0616-V2

joyglobal.com