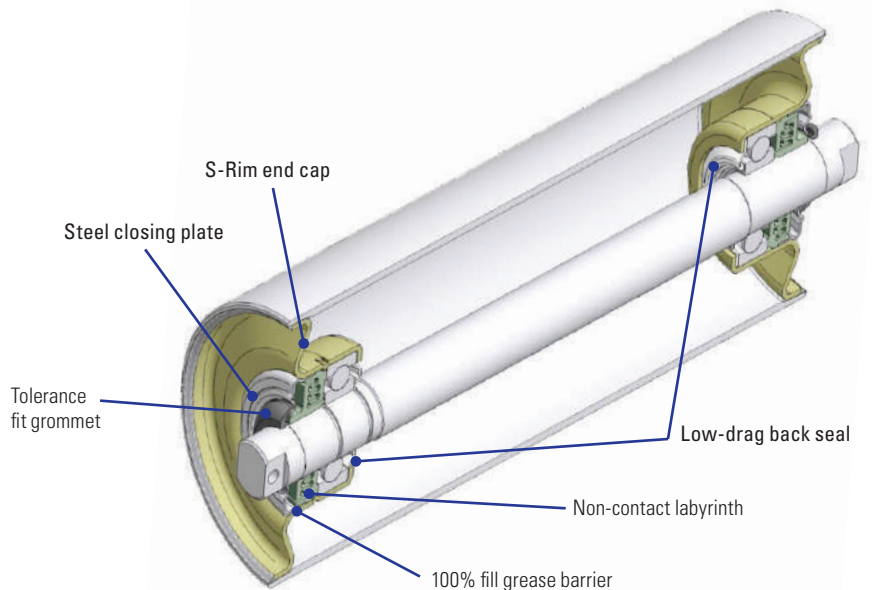


S-Rim roller

Summary

Designed to operate in high-tonnage applications, the S-Rim roller from Komatsu delivers a market-leading innovative design and is manufactured with our world-class production equipment. Every component of the S-Rim assembly is designed to offer a 50,000-hour life under nominal loading conditions.

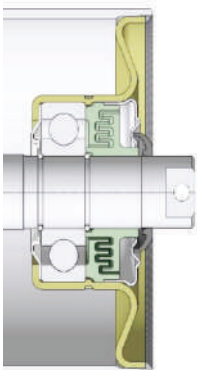


S-Rim product advantages

- Tube bore tolerances provide an engineered fit between the shell and endcap which protects the weld from reverse bending under nominal loads
- Non-contact labyrinth seals offer increased sealing performance, whilst reducing rolling resistance and power requirements
- Welded joint designed for cyclic loads
- Controlled tolerances in the S-Rim roll result in bearing alignments that provide increased life and minimised drag
- The rigid design of the S-Rim endcap, combined with a machined finish, reduces weld distortion, minimises TIR and reduces noise from belt interface

Combined with world-class Joy roller standards

- The endcap welded connection offers superior protection against separation and belt damage
- All rollers are designed based on the engineering-first principles of fixed and floating bearings. The fixed bearing is held on the outer race within the pressed bearing housing by nibbs and on the inner race by the use of spring retaining rings. The floating bearing/sealing assembly is allowed to find its own natural designed position. This arrangement eliminates the bearing axial pre-load that can be experienced during manufacture and reduces the potential for misalignment that can occur during the manufacturing process. It also allows unrestricted bearing axial displacement due to temperature changes caused by operational or environmental factors
- Rollers can be marked with a unique serial number and the date of manufacture for better data recording



The S-Rim roller from Komatsu is available in a wide range of sizes from 127 mm to 219 mm diameter with bearings ranging from 25 mm to 50 mm

Additional S-Rim options:

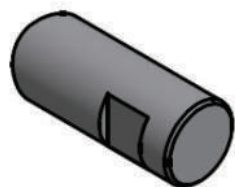
- **Bearings:** as a standard, we offer our S-Rim rollers complete with sealed-for-life bearings. Open bearings are also available with grease selections to suit your specific requirements, such as fire retardant or low/high temperature options. Contact us to discuss the available options for your specific application
- **Roller identification:** as part of our roller identification feature, we can also include site part numbers for easier identification in storage

Global S-Rim manufacture range							
Roller shell diameter	Minimum shell material gauge	Bearing diameter/reference					
		25 mm 6305	30 mm 6306	35 mm 6307	40 mm 6308	45 mm 6309	50 mm 6310
127 mm	3.2 mm						
152.4 mm	4 mm						
159 mm	4 mm						
168.3 mm	5 mm						
178 mm	6 mm						
193.7 mm	6 mm						
219 mm	6 mm						

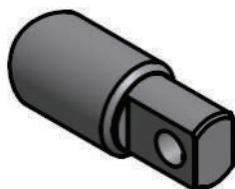
 Designs available

Note: Shell material gauges shown are minimum recommended to suit the 50,000-hour life. Other material sizes are available upon request.

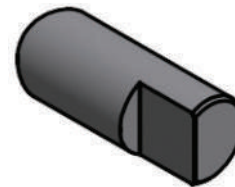
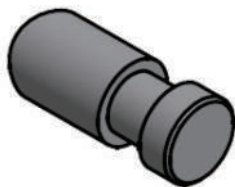
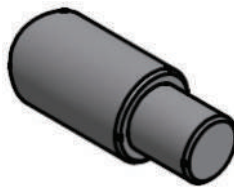
Spindle end options



Available as single or double flat



Available with or without hole



Komatsu Mining Corp. Group

mining.komatsu

Product designs, specifications and/or data in this document are provided for informational purposes only and are not warranties of any kind. Product designs and/or specifications may be changed at any time without notice. The only warranties that apply to sales of products and services are standard written warranties, which will be furnished upon request.

Komatsu, Joy, Montabert, P&H and other trademarks and service marks used herein are the property of Komatsu Ltd., Komatsu Mining Corp., or their respective owners or licensees.

© 2019 Komatsu Mining Corp. All rights reserved.