

## D-Ring Fall Protection Upgrade

P&H D-ring fall protection upgrade provides extensive placement of D-ring anchorage plates for workers to tie off fall restraint harnesses.



Typical D-ring assembly with warning sign

### Summary

The P&H D-ring fall protection upgrade helps to improve worker safety by providing multiple locations for securing restraint harnesses while performing inspections and maintenance. All D-ring kits include multiple D-ring connectors, each with mounting plate, warning label and mounting hardware.

For more information, contact a local Komatsu Mining representative or visit [mining.komatsu](http://mining.komatsu)

### Key features and benefits

Fall protection packages are available for five (5) mining shovel safety zones:

- Zone 1: revolving frame – underneath and around perimeter
- Zone 2: roof beams – above hoist rope tuggers, swing transmissions and electrical cabinets
- Zone 3: gantry
- Zone 4: dipper
- Zone 5: boom

D-ring connectors meet or exceed all applicable industry standards including OSHA, ANSI and the stringent ANSI Z359.

### Standard equipment on new models:

Available as standard equipment on P&H 2800 and 4100-class shovels.

### Retrofits

Kits are available for P&H 2300XPA/XPB/XPC, 2800XPA/XPB/XPC DC and 4100A/C shovels.

### Installation requirements

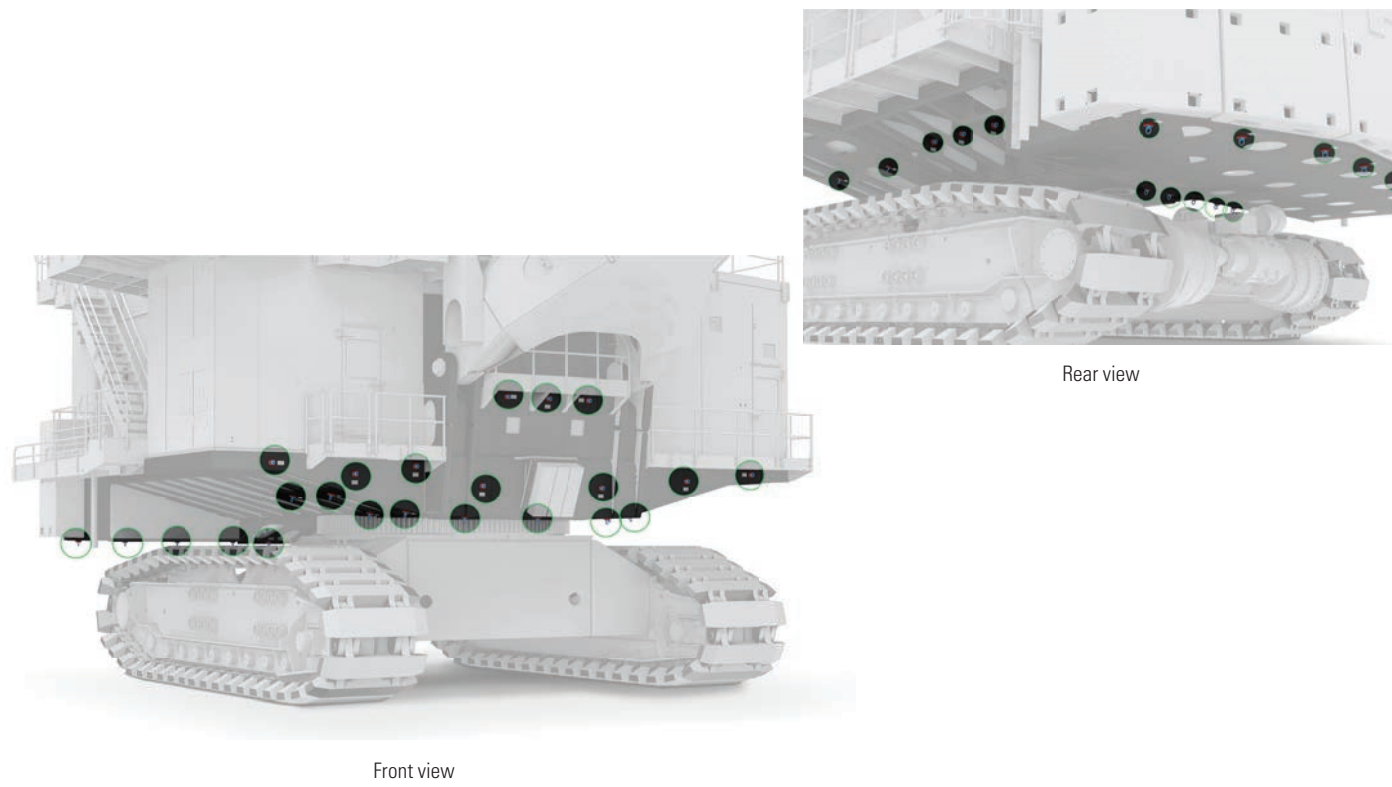
Estimate: 20 minutes per D-ring for one person. Disk grinder to remove paint, wire feed or stick welder, impact and torque wrench (75 ft-lb) with 3/4" socket.

### Operating costs

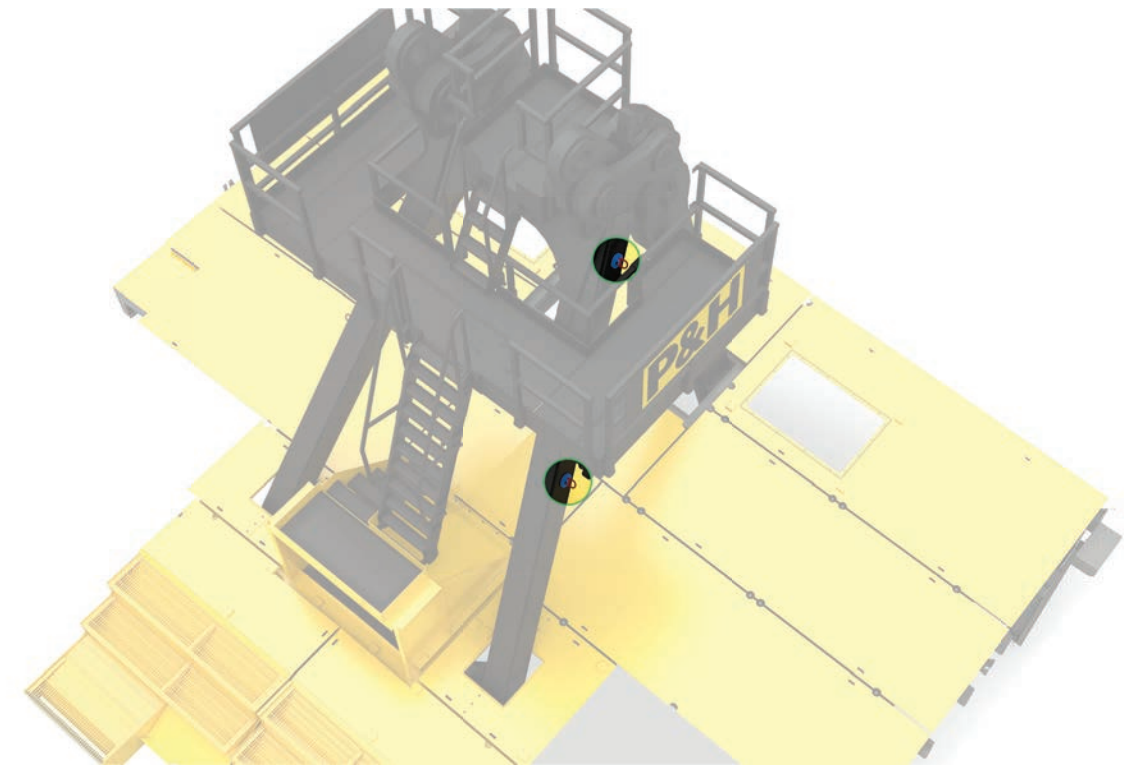
No additional operating cost once the D-rings are installed other than periodic inspection of the D-rings and fasteners.

### D-ring arrangement

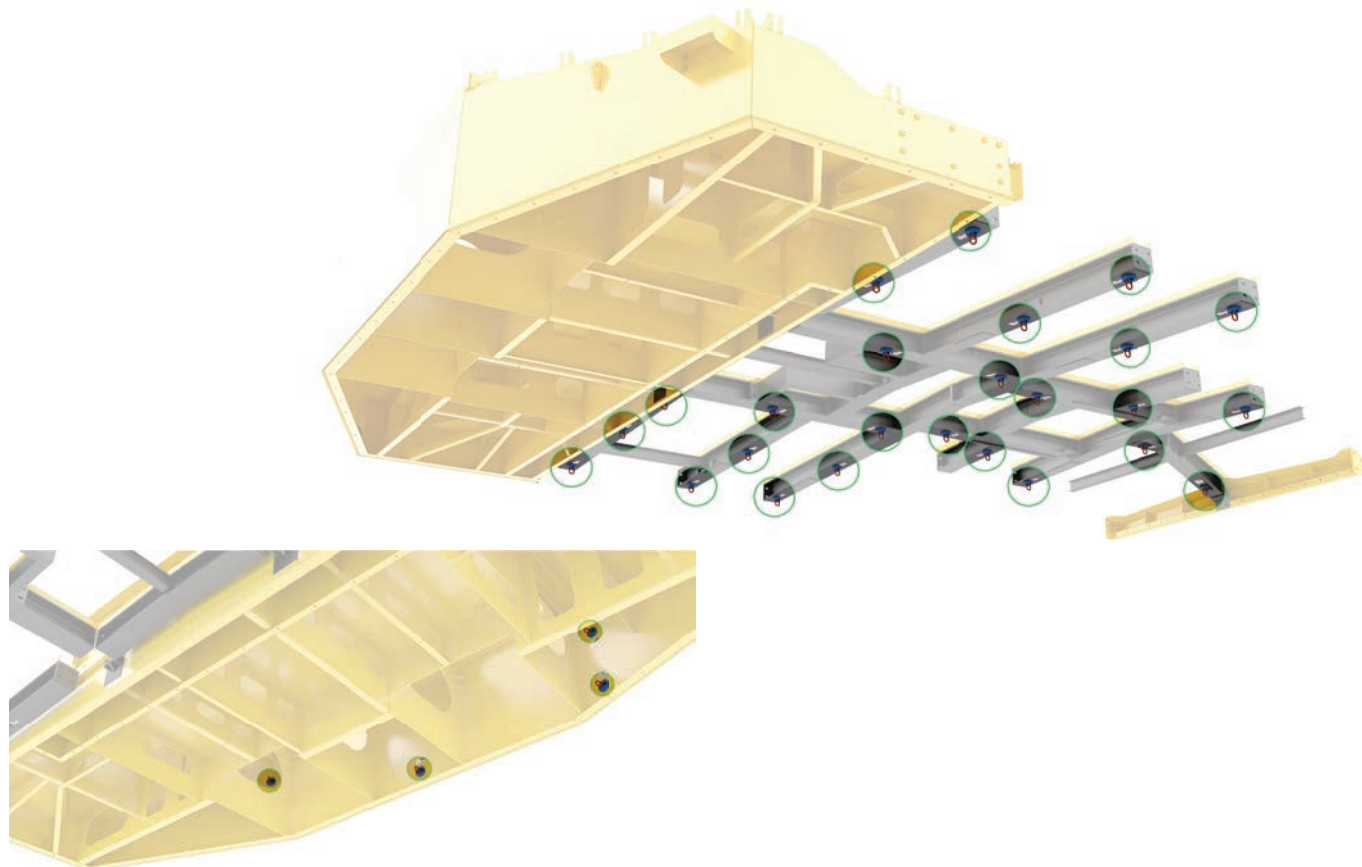
#### Zone 1



#### Zone 3



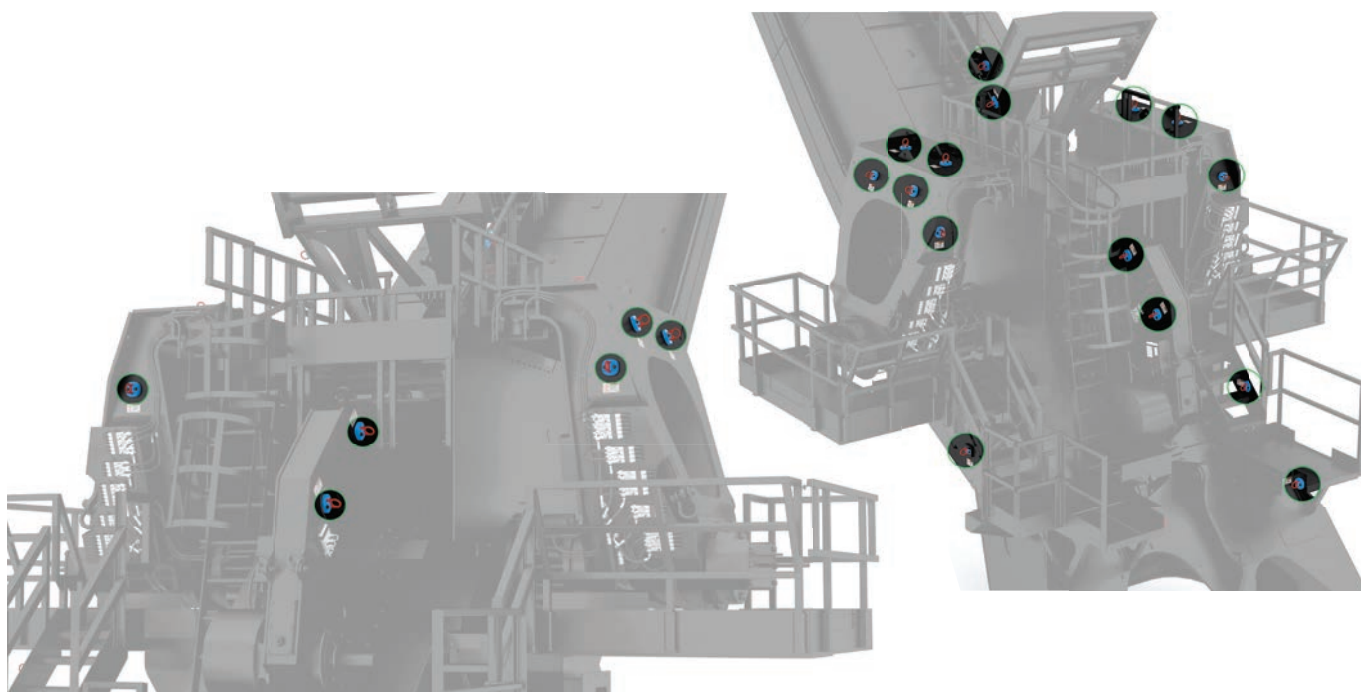
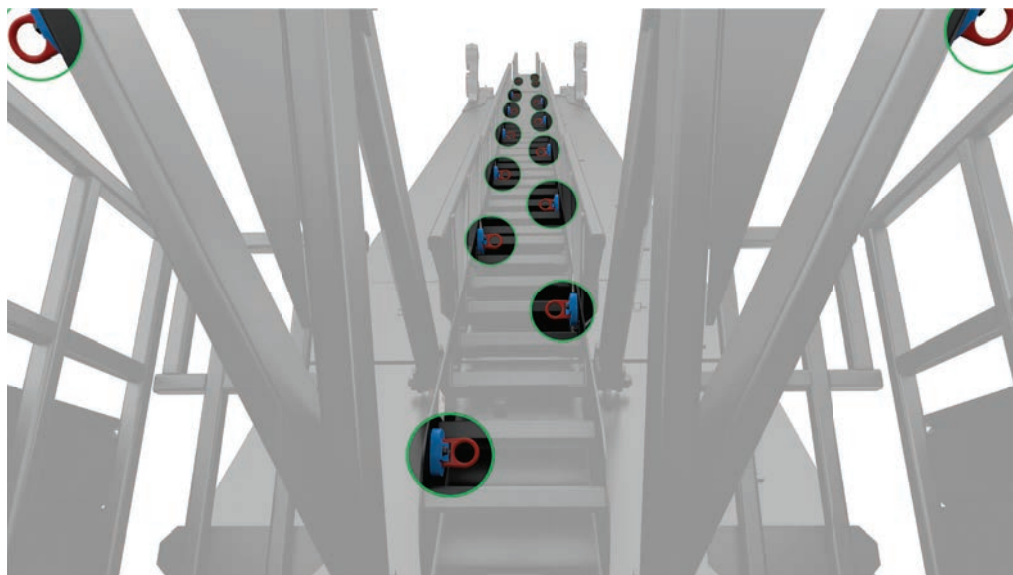
#### Zone 2



#### Zone 4



Zone 5



**Komatsu Mining Corp. Group**

mining.komatsu

Product designs, specifications and/or data in this document are provided for informational purposes only and are not warranties of any kind. Product designs and/or specifications may be changed at any time without notice. The only warranties that apply to sales of products and services are standard written warranties, which will be furnished upon request.

Komatsu, Joy, Montabert, P&H, and other trademarks and service marks used herein are the property of Komatsu Ltd., Komatsu Mining Corp., or their respective owners or licensees.

© 2019 Komatsu Mining Corp. All rights reserved.

