

KOMATSU

P&H

Blasthole Drilling Tools Product Overview



Who we are:

Since 1921, Komatsu has stood for unrivaled quality and reliability. Our enduring global success stems from the principles of our founder, Meitaro Takeuchi, who envisioned a sustainable future built through globalization, quality first, technology innovation and talent development. These defining principles, along with an emphasis on safety and compliance, remain part of our Komatsu DNA. With each brand and company added to the Komatsu family, we expand our capabilities, leveraging our global teams to push beyond what can be done and create what can be imagined. We believe partnering directly with our stakeholders and being in the workplace (gemba) is the best way to gain insight into their challenges, win their trust and develop cutting-edge solutions.

What we do:

Komatsu is an indispensable partner to the mining, forestry, industrial and construction industries that maximizes value for customers through innovative solutions. With a full line of products supported by our advanced IoT technologies and global service network, we help customers safely and sustainably optimize their operations. Our **Komatsu, P&H, Joy** and **Montabert** equipment and services are used to extract fundamental minerals and develop modern infrastructure.

Blasthole drilling tools

Komatsu has designed and introduced a variety of rotary blasthole tools to meet the increasing drilling needs of our customers. All of our blasthole tools are designed to provide top performance and value: less rig maintenance, more productivity and lower operating costs.

Blasthole drill steel

P&H blasthole drill steel, both fabricated and integral, is tailored to the particular drill. Our fabricated drill steel features tool joints made from alloy steel and is inspected by ultrasonic means as part of our quality processes. Wrench slots or flats are milled to suit the requirements of the drill. All rotary-shouldered connections are kemplated to protect against galling during the break-in period. Heavy wall construction and optional hard-facing result in longer life and lower operating costs.

Our integral drill steel is made from premium quality alloy steel bars. Bores are trepanned to sizes that result in the correct balance for the selected rotary shouldered connection. Integral drill steel is available step-bored to reduce weight while concentricity and axial alignment of the connections to the drill steel are held to close tolerance. Application of tungsten carbide hard-facing is available to protect both fabricated and integral steel from abrasion and erosion. Komatsu representatives are available to study your needs and assist you in selecting the proper drill steel and rotary connections for your particular application.



Swivel mount shock sub

The swivel mount shock sub is a resilient coupling used between the drill and the drill pipe on top-drive machines. Our swivel mount shock subs are designed to reduce both axial and torsional vibrations and effectively dampen the shock loads created by the action of the bit. Shock and vibratory energy transferred between drill and bit are absorbed through a series of rubber-bonded segments.

Benefits include: increased penetration rate, longer bit life, reduced noise levels and lower drill maintenance costs.



Stabilizers

Model 63-B stabilizers and welded blade stabilizers lead our complete line of P&H blasthole stabilizers. The model 63-B stabilizer is the original roller stabilizer specially designed for blasthole drilling. Positioned directly behind the bit, the model 63-B stabilizer centralizes and stabilizes the bit providing smooth rotation, reduced vibration and more effective drilling. Air is circulated through the rollers, cooling and cleaning the hardened bearing surfaces, maximizing wear life. The result is better penetration rates, higher productivity and lower overall cost.

Our welded blade stabilizers are manufactured with a body of alloy steel and can be supplied with straight or spiral ribs. Ribs are steel wear bars welded to the body and covered with a hard metal overlay or tungsten carbide inserts. P&H welded blade stabilizers are extremely effective in wet or dry, soft and medium formations. These stabilizers have been designed for increased life and reduced operating costs.



Rotary deck bushing

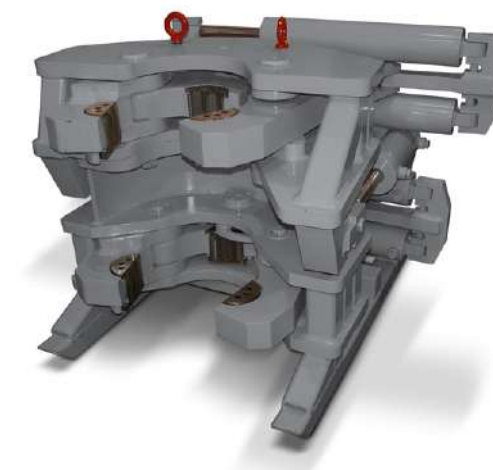
Rotary deck bushings are engineered and manufactured to withstand the harshest drilling conditions. Available in both standard and heavy-duty versions, the standard series deck bushing is best suited for drills which operate with steel below 203 mm (8 inches). Komatsu recommends heavy-duty rotary deck bushings for drills operating with steel larger than 203 mm (8 inches). All P&H rotary deck bushings offer the advantages of long life and reduced drill vibration.

Portable makeup/break-out tool

The portable makeup/break-out tool can service all of the drills in a mining operation. Our makeup/break-out tool assists the user in making connections between drill pipe(s) and bit sub at the correct value, thus eliminating the need for welding.

The P&H makeup/break-out wrench allows for quick and easy dismantling and assembly of the drill string.

- Capable of torquing 219 to 365 mm (8.625 to 14.375 inch) drill pipe
- Maximum 244,047 Nm (180,000 ft-lbs) of torque at 20,684 kPa (3000 psi)
- Designed to suit any available power supply



Contact your Komatsu Mining service representative for more information on Blasthole Drilling Tools or visit mining.komatsu

Komatsu Mining Corp. Group

mining.komatsu



Product designs, specifications and/or data in this document are provided for informational purposes only and are not warranties of any kind. Product designs and/or specifications may be changed at any time without notice. The only warranties that apply to sales of products and services are Komatsu's standard written warranties, which will be furnished upon request.

Komatsu, Joy, Montabert, P&H and other trademarks and service marks used herein are the property of Komatsu Ltd., Komatsu Mining Corp., or their respective owners or licensees.

© 2019 Komatsu Mining Corp. All rights reserved.