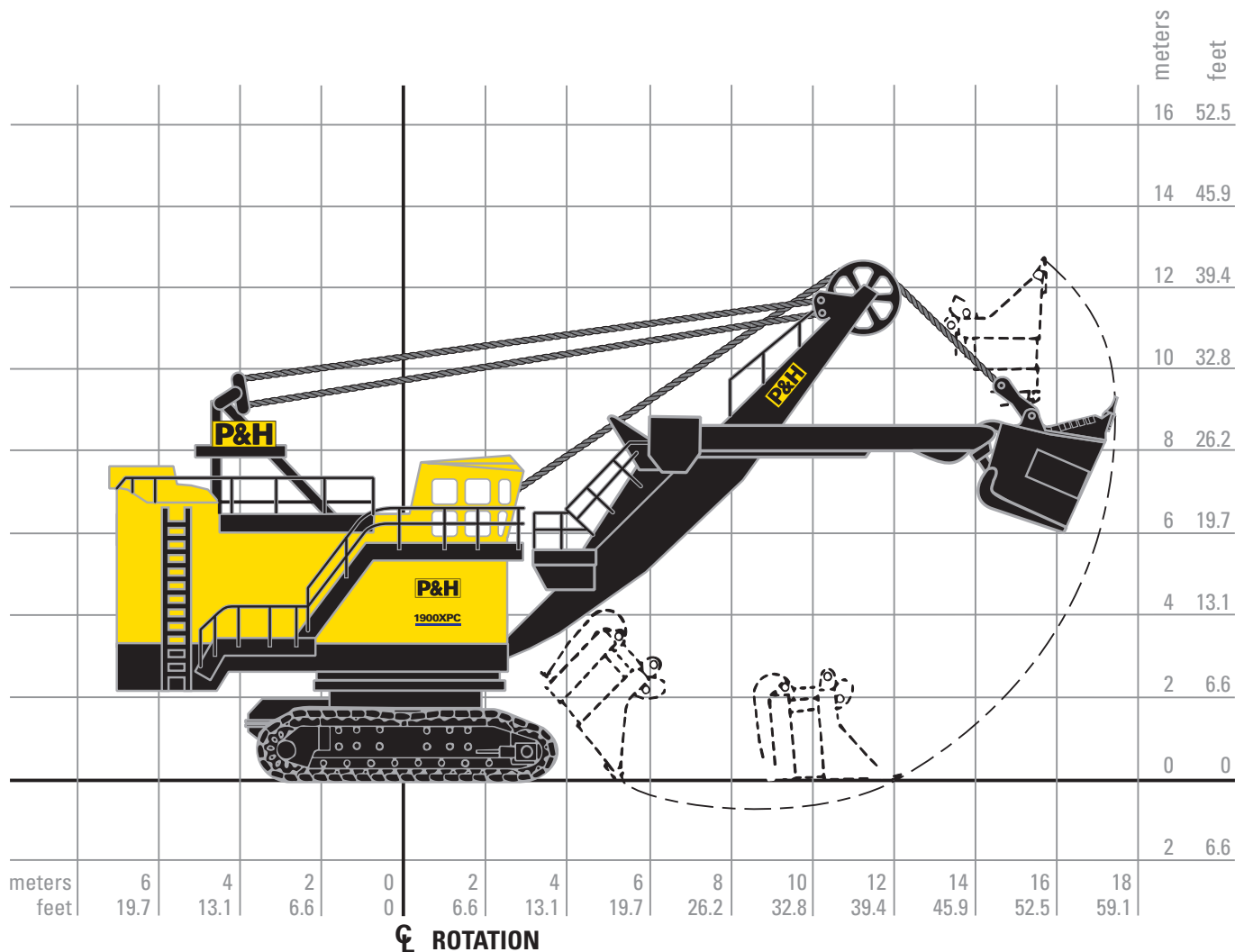


1900XPC Electric Mining Shovel General Specification



Working ranges

Height of cut	13.0 m	42 ft. 6 in.
Radius of cut	17.8 m	58 ft. 6 in.
Dumping height* (door open)	8.2 m	27 ft. 0 in.
Floor level radius	11.6 m	38 ft. 0 in.
Tail swing radius	7.0 m	23 ft. 0 in.
Operator eye level	7.4 m	24 ft. 3 in.

*Height shown with bail-type dipper. Heights will be greater with bail-less or compact-bail dippers. Actual dumping height can be greater than door clearance height.

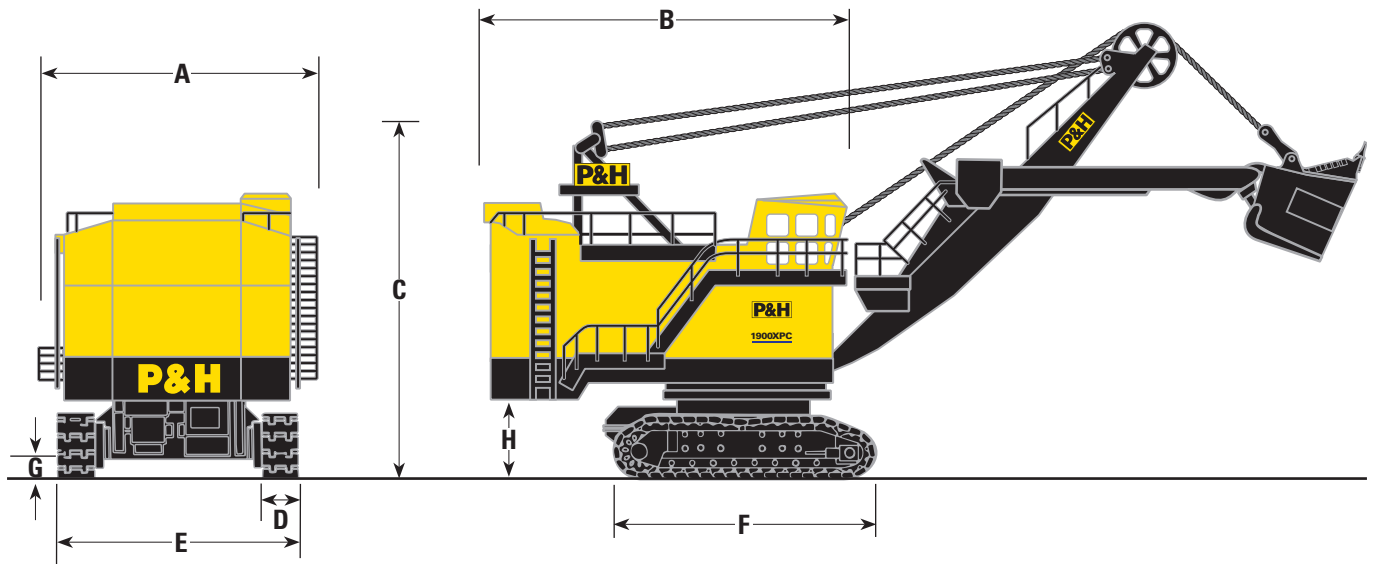
Capacity

Nominal payload*	18 mt	20 st
Nominal dipper capacity*	10.7 m ³	14 yd ³
Range dipper capacity	7.5-19.1 m ³	10-25 yd ³
Rated suspended load	37.2 mt	41 st

*Payload and dipper capacity are dependent on many factors.
Contact Komatsu Mining for an analysis of your specific application.

Overall dimensions

A	Width	8.05 m	26 ft. 5 in.
B	Length	10.36 m	34 ft. 0 in.
C	Height over gantry	10.11 m	33 ft. 2 in.
D	Width of crawler shoes	1066 mm	42 in.
		1219 mm	48 in.
E	Width of crawlers (42")	6.71 m	22 ft. 0 in.
F	Length of crawlers	7.62 m	25 ft. 0 in.
G	Ground clearance	0.66 m	2 ft. 2 in.
H	Height — ground to bottom of counterweight slabs	1.70 m	5 ft. 7 in.



Komatsu Mining Corp. Group

mining.komatsu

Product designs, specifications and/or data in this document are provided for informational purposes only and are not warranties of any kind. Product designs and/or specifications may be changed at any time without notice. The only warranties that apply to sales of products and services are standard written warranties, which will be furnished upon request.

Komatsu, Joy, Montabert, P&H and other trademarks and service marks used herein are the property of Komatsu Ltd., Komatsu Mining Corp., or their respective owners or licensees.

© 2018 Komatsu Mining Corp. All rights reserved.

