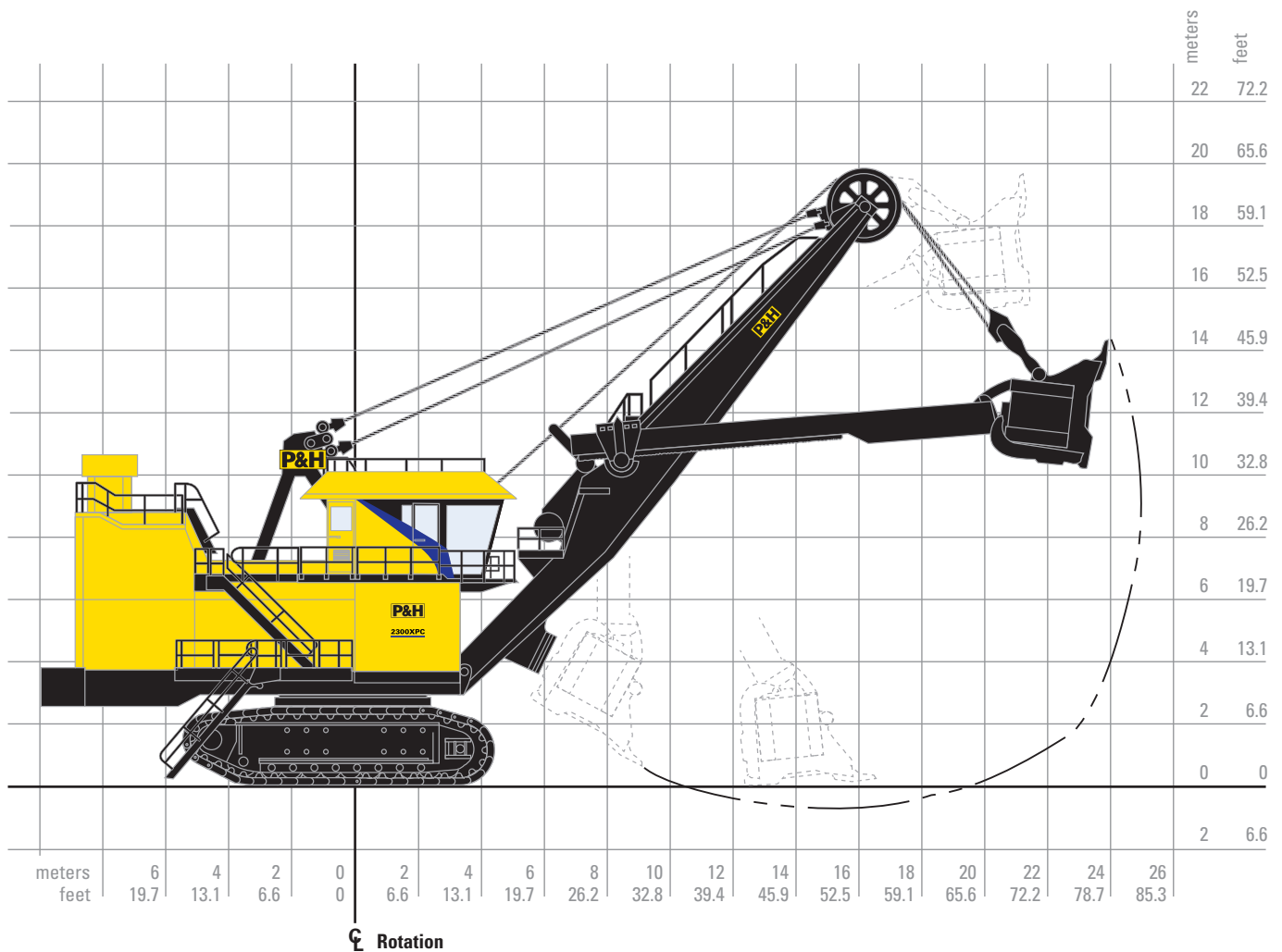


2300XPC/LR Electric Mining Shovel General Specification



Working ranges

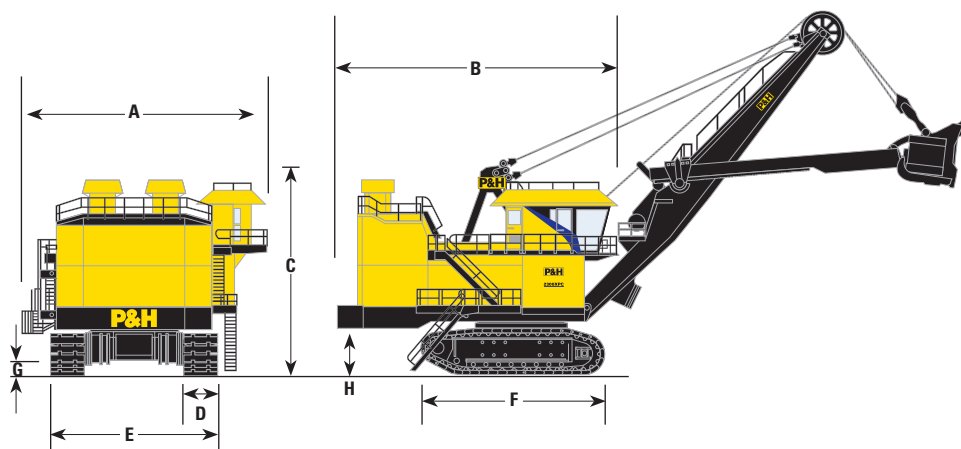
Height of cut	19.8 m	65 ft. 0 in.
Radius of cut	25.0 m	82 ft. 0 in.
Dumping height (maximum)* (door open)	14.4 m	47 ft. 2 in.
Floor level radius	16.5 m	54 ft. 0 in.
Tail swing radius	10.1 m	33 ft. 0 in.
Operator eye level	7.9 m	26 ft. 0 in.

*Height shown with bail-type dipper. Heights will be greater with bail-less or compact-bail dippers. Actual dumping height can be greater than door clearance height.

Capacity

Nominal payload*	31.8 mt	35 st
Nominal dipper capacity		
SAE struck	12.2-26.8 m ³	16.0-35.0 yd ³
SAE 2:1	13.3-29.2 m ³	17.4-38.1 yd ³
Rated suspended load	63.5 mt	70 st
Optimum truck size (180 mt (200 st) truck shown)	109-218 mt	120-240 st

*Payload and dipper capacity are dependent on many factors.
Contact Komatsu Mining for an analysis of your specific application.



Overall dimensions

A	Width	10.9 m	35 ft. 8 in.
B	Length	13.4 m	44 ft. 0 in.
C	Height over gantry	11.1 m	36 ft. 6 in.
D	Width of crawler shoes	1321 mm 1778 mm	52 in. 70 in.
E	Width of crawlers (52")	8.7 m	28 ft. 5 in.
F	Length of crawlers	9.9 m	32 ft. 4 in.
G	Ground clearance	0.9 m	3 ft. 0 in.
H	Height — ground to bottom of counterweight slabs	2.6 m	8 ft. 5 in.

Power requirements

Supply voltage*	4160 or 7200V 3 Phase, 60 Hz	3300, 5000, 6000 or 6600 3 Phase, 50 Hz
Supply transformer	(Minimum) 2000 kVA	
Minimum short circuit VA available at shovel	16 MVA	

*Voltage per customer requirements

Swing

Two modular P&H planetary gear cases of proven design and a single piece forged swing gear transmit torque for fast cycle times.

Spring-set air release disc brakes — one per motor.

Splash lube filtration system.

Propel

Two rugged P&H planetary gear cases of proven design independently transmit torque to the drive sprockets, producing the tractive effort required for fast, efficient propel and positioning operations.

P&H brand Delta drive system with heavy duty cast crawler shoes.

Spring-set air release disc brakes — one per motor.

Crowd

Powerband V-belt drive between motor and gear case absorbs shock loads.

First and second reduction gearing in enclosed gear case for reliable splash lubrication, ease of maintenance, and extended component life.

Twin-leg dipper handle with torsion box and rack and pinion drive has inherent stability in the bank for optimal digging.

Spring-set air release disc brake.

Hoist

All gearing housed in single enclosed gear case with filtered and cooled oil fed to all bearings in addition to splash lubrication for reliable operation and ease of maintenance.

Large 56" diameter hoist drum for extended rope bending life. Ferrule becket system and dual electric tuggers are standard for efficient rope change.

Spring-set air release disc brakes — one per motor.

Komatsu Mining Corp. Group

mining.komatsu



Product designs, specifications and/or data in this document are provided for informational purposes only and are not warranties of any kind. Product designs and/or specifications may be changed at any time without notice. The only warranties that apply to sales of products and services are standard written warranties, which will be furnished upon request.

Komatsu, Joy, Montabert, P&H, Delta and other trademarks and service marks used herein are the property of Komatsu Ltd., Komatsu Mining Corp., or their respective owners or licensees.

© 2018 Komatsu Mining Corp. All rights reserved.