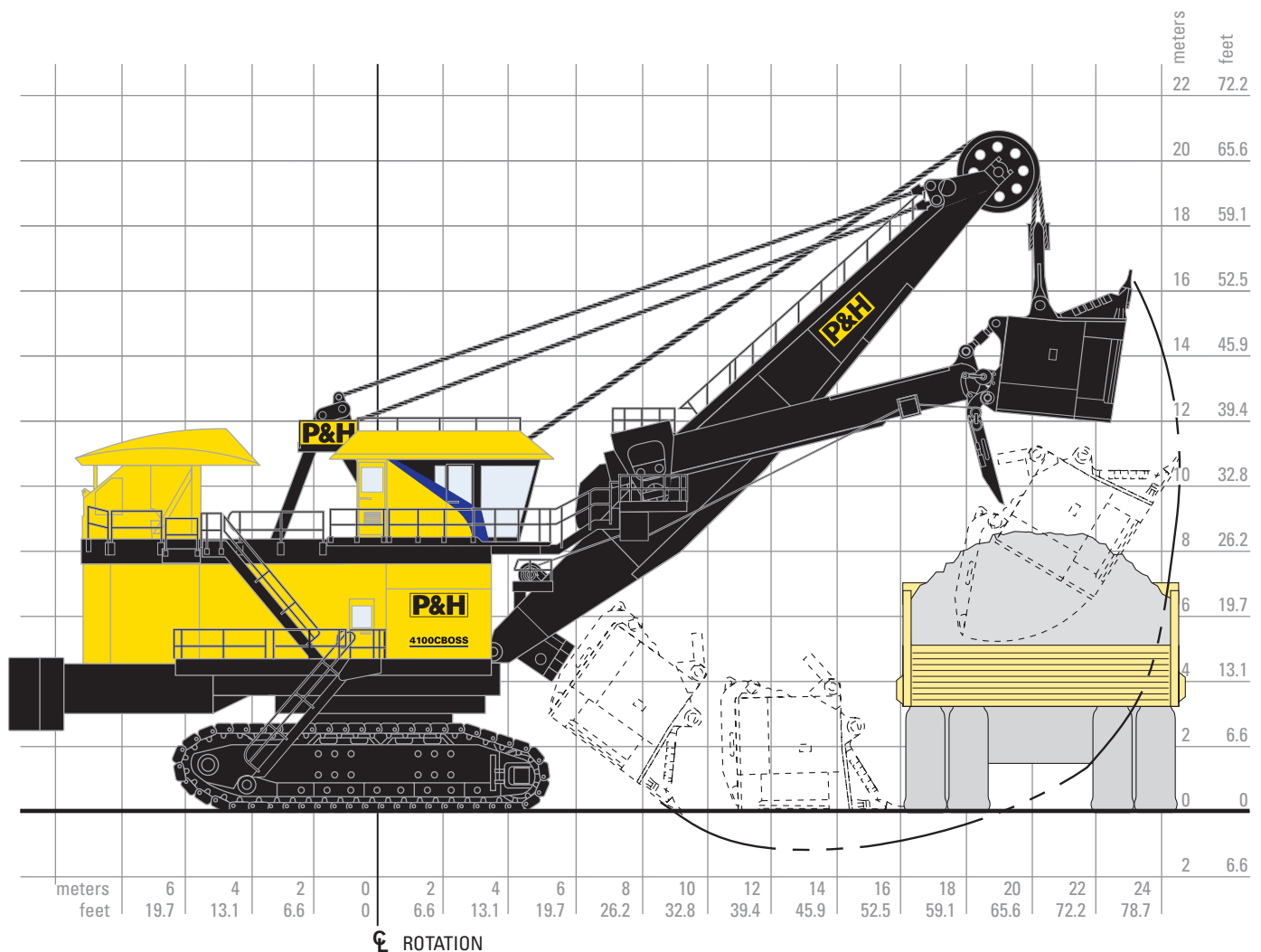


## 4100C BOSS Electric Mining Shovel General Specification



### Working Ranges

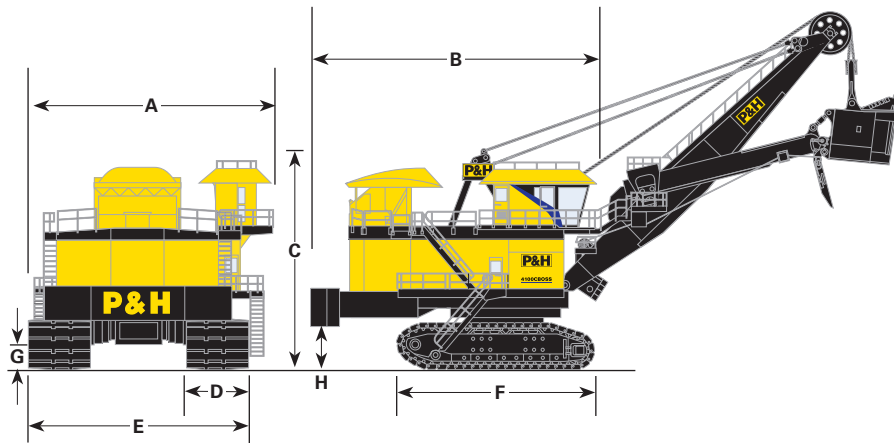
Height of cut	16.9 m	55 ft. 4 in.
Radius of cut	24.7 m	80 ft. 11 in.
Dumping height* (door open)	9.5 m	31 ft. 0 in.
Floor level radius	16.3 m	53 ft. 5 in.
Tail swing radius	11.6 m	38 ft. 0 in.
Operator eye level	9.8 m	32 ft. 3 in.

\*Height shown with bail-type dipper. Heights will be greater with bail-less or compact-bail dippers. Actual dumping height can be greater than door clearance height.

### Capacity

Nominal payload*	90.7 mt	100 st
Nominal dipper capacity		
SAE struck	44.3 m <sup>3</sup>	58.0 yd <sup>3</sup>
SAE 2:1	48.4 m <sup>3</sup>	63.0 yd <sup>3</sup>
Rated suspended load	161.0 mt	178 st
Optimum truck size (360 mt (400 st) truck shown)	172-363 mt	190-400 st

\*Payload and dipper capacity are dependent on many factors. Contact Komatsu Mining for an analysis of your specific application.



Overall Dimensions		
A	Width	14.0 m 45 ft. 10 in.
B	Length	17.2 m 56 ft. 5 in.
C	Height over gantry	13.4 m 43 ft. 10 in.
D	Width of crawler shoes	3505 mm 138 in. 3302 mm 130 in.
E	Width of crawlers (138")	12.8 m 41 ft. 11 in.
F	Length of crawlers	11.6 m 38 ft. 0 in.
G	Ground clearance	1.1 m 3 ft. 6 in.
H	Height — ground to bottom of counterweight slabs	2.8 m 9 ft. 1 in.

Power Requirements		
Supply voltage*	7200 or 13800V 3 Phase, 60 Hz	6000, 6600, 7200 or 11000 3 Phase, 50 Hz
Supply transformer	(Minimum) 3300 kVA	
Minimum short circuit VA available at shovel	25 MVA	

\*Voltage per customer requirements

**Swing**  
Two modular P&H planetary gear cases of proven design and a single piece forged swing gear transmit torque for fast cycle times.  
Spring-set air release disc brakes – one per motor.  
Splash lube filtration system.

**Propel**

Propel on demand provides rapid transfer to propel mode. Rapid transfers allow frequent positioning of the shovel to the bank resulting in faster cycle times and more efficient digging.  
Two rugged P&H planetary gear cases of proven design independently transmit torque to the drive sprockets, producing the tractive effort required for fast, efficient propel and positioning operations.  
Delta drive low tension sprocket drive system with heavy duty cast crawler shoes.  
Spring-set air release disc brakes – one per motor.

**Crowd**

Powerband V-belt drive between motor and gear case absorbs shock loads.  
First and second reduction gearing in enclosed gear case for reliable splash lubrication, ease of maintenance, and extended component life.  
Twin-leg dipper handle with torsion box and rack and pinion drive has inherent stability in the bank for optimal digging.  
Spring-set air release disc brake.

**Hoist**

All gearing housed in single enclosed gear case with filtered and cooled oil fed to all bearings in addition to splash lubrication for reliable operation and ease of maintenance.  
Large 68" diameter hoist drum for extended rope bending life. Ferrule becket system and dual electric tuggers are standard for efficient rope change.  
Spring-set air release disc brakes – one per motor.