

Large Diameter Roller Circle Dragline Services

Summary

P&H walking draglines feature a large diameter roller circle comprised of specially processed forged steel rollers with a high stack, large diameter swing rack-and-pinion setup.

Benefits

- Lower loading in the rail pad support structures provides long life and reliability
- Lower structural stress resulting in increased reliability of tub and deck structures
- More rollers resulting in lower loading on each roller and increased roller and rail life
- Rollers are made with specially processed forged steel for maximum rail and roller fatigue life
- Roller bushings feature a self-lubricating design decreasing maintenance cost

Description

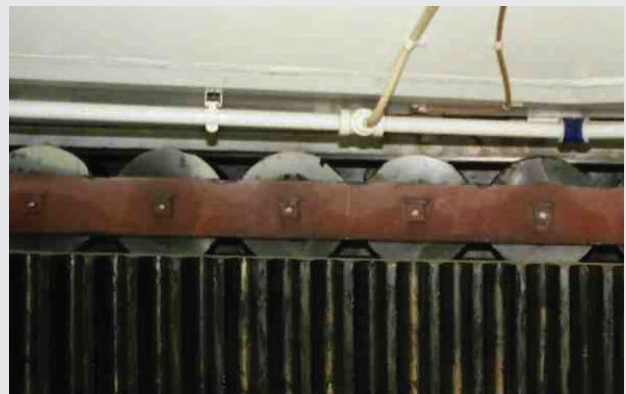
P&H walking draglines are designed with a large diameter roller circle that allows for more rollers to be included into the system. With more rollers in place, there is less stress in the pad as well as the tub and deck structures.

With a large diameter roller circle design, the weight of the machinery house and dig attachment is distributed over a larger area. This translates into lower peak loads applied to the deck and tub.

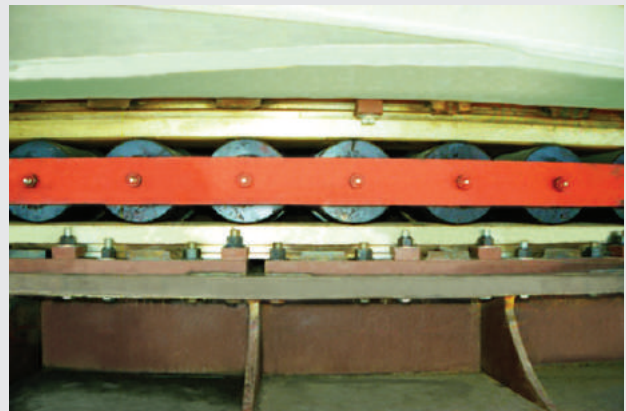
For easier roller change-outs, the full circle upper and lower rail design features a roller removal segment in the upper rail.

Product application

P&H walking draglines



More rollers result in lower load on each roller, thus increasing roller and rail life



Lower loads in support structure provide reliability and long life

For more information, contact a local Komatsu Mining Corp. representative or visit mining.komatsu

Komatsu Mining Corp.

mining.komatsu



Product designs, specifications and/or data in this document are provided for informational purposes only and are not warranties of any kind. Product designs and/or specifications may be changed at any time without notice. The only warranties that apply to sales of products and services are standard written warranties, which will be furnished upon request.

Komatsu, Joy, Montabert, P&H and other trademarks and service marks used herein are the property of Komatsu Ltd., Komatsu Mining Corp., or their respective owners or licensees.

© 2018 Komatsu Mining Corp. All rights reserved.